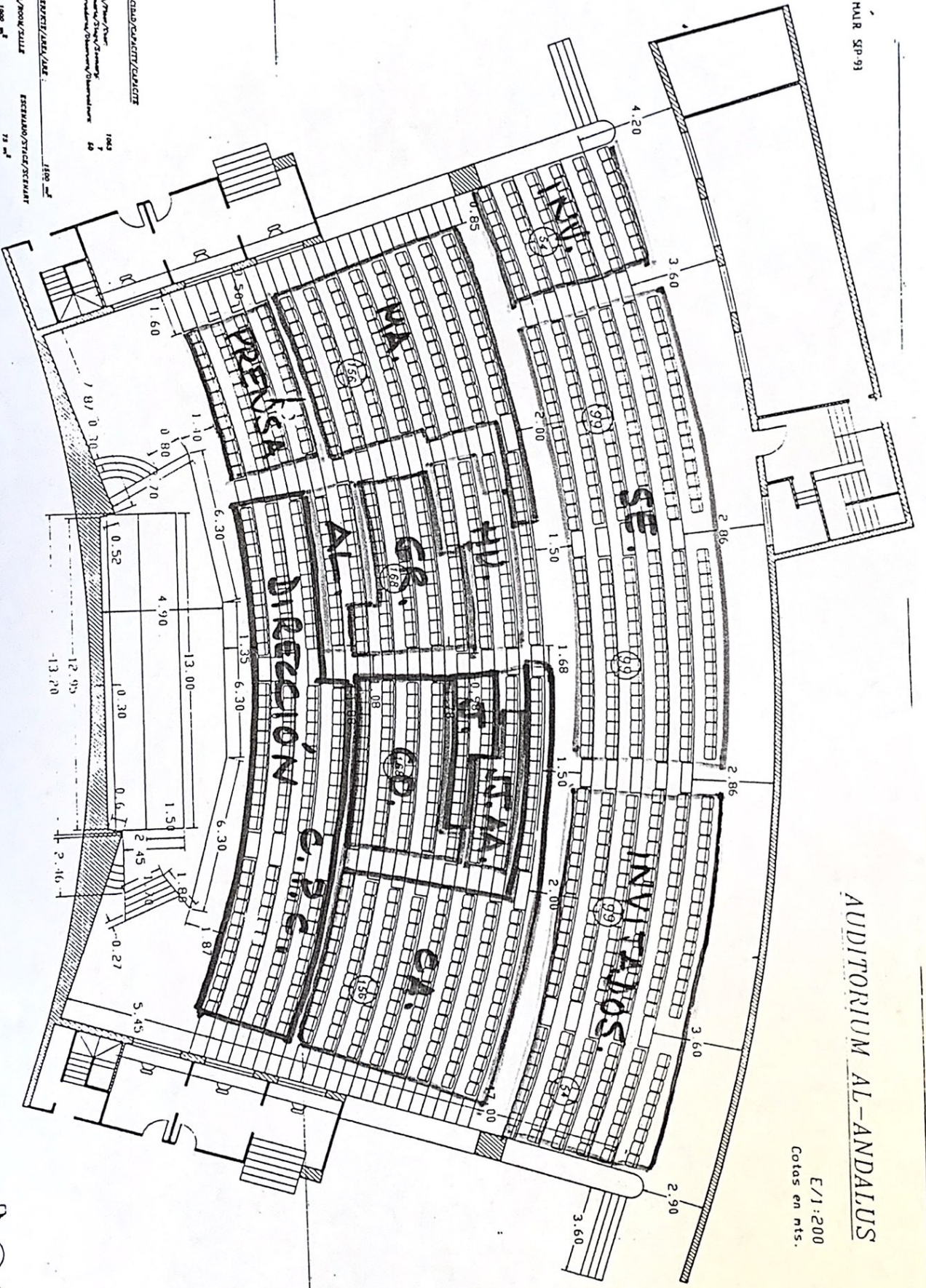


HALR SP-93

AUDITORIUM AL-ANDALUS

E/1:200
Cotas en mts.



CAPACIDAD/CAPACITY/CAPACITE

1042
1042
1042

SUPERFICIE/AREA/ARE

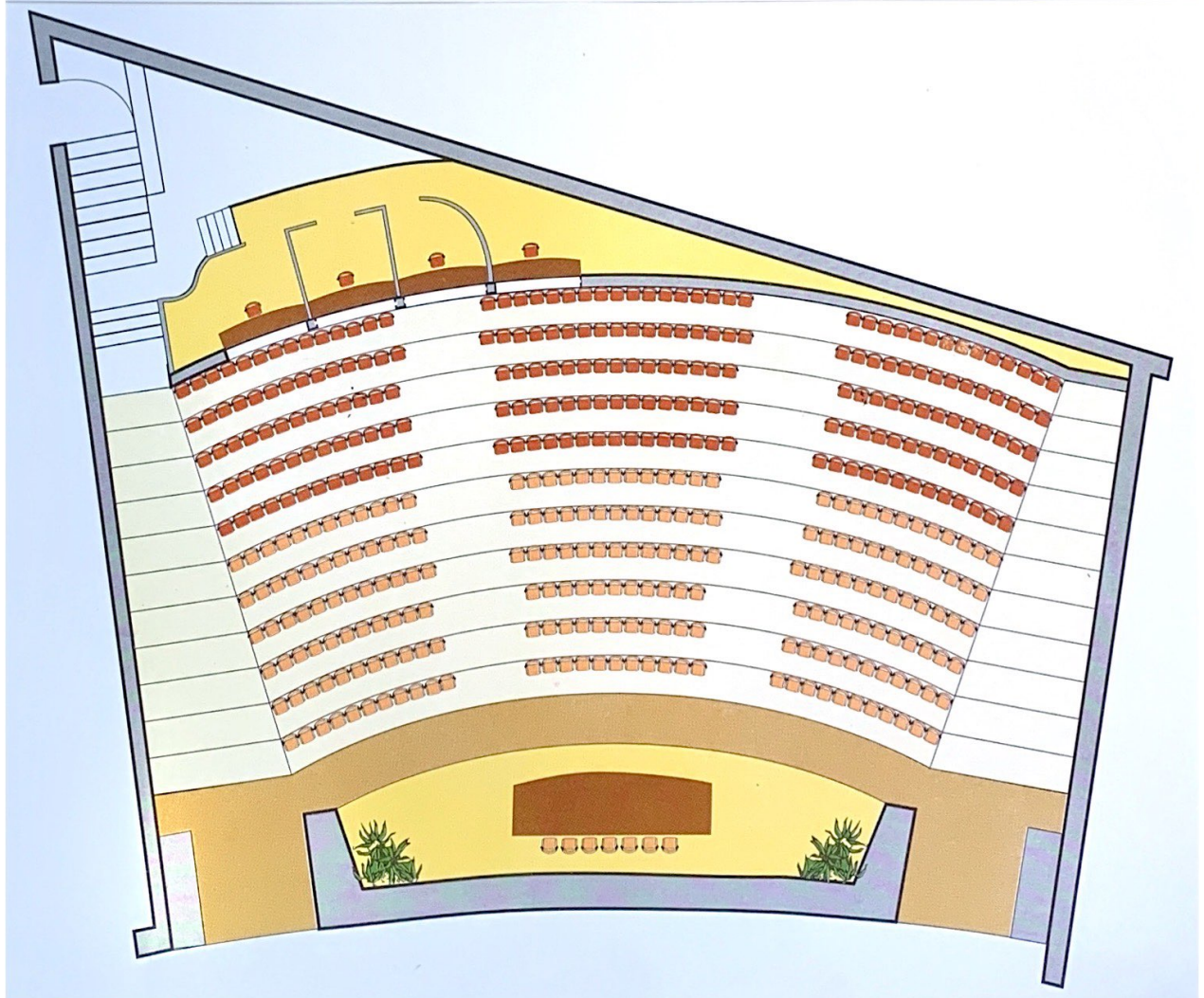
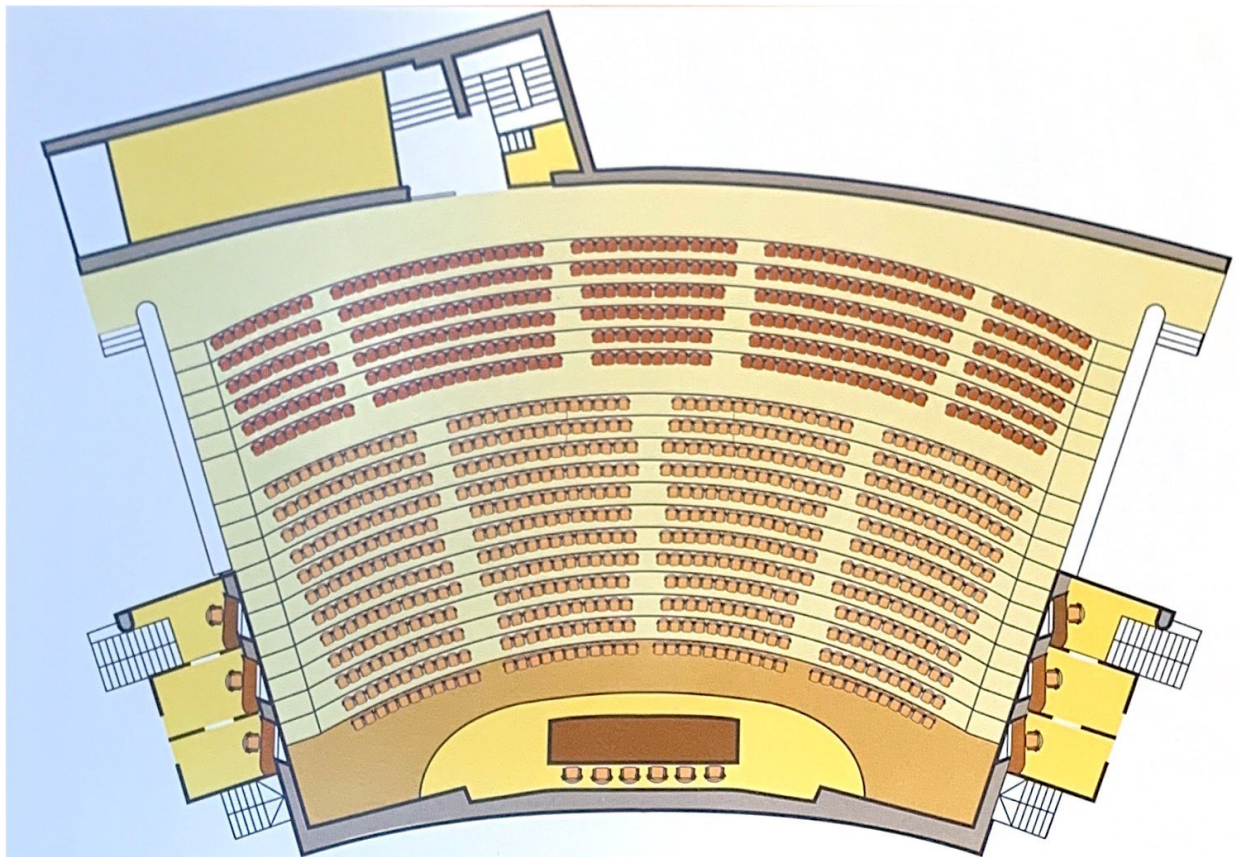
1100 m²
1100 m²
1100 m²

DIRECCIONES DIMENSIONES/DIRECTIONS

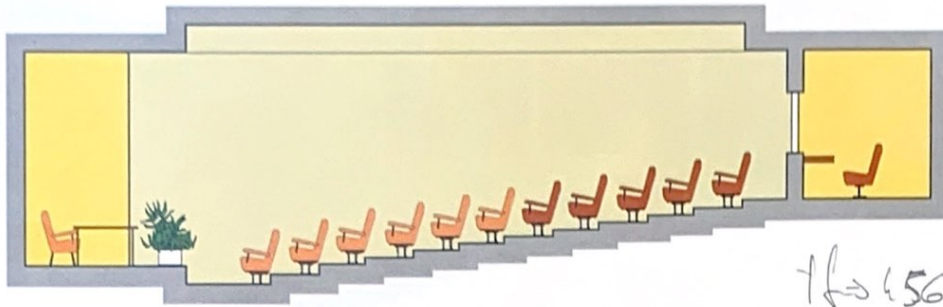
SEAL/ROOM/STALLE
1000 m²
73 m²
1000 m²
73 m²

Palacio de Congresos Congress Center SEVILLA





Nº1 SALA ITALICA / ITALICA ROOM



SALA NUMERO 1
Superficie: 450 m²

DISPOSICION:

Capacidad 425 asientos, estilo teatro.
Patio 410 asientos, con mesas abatibles.
Escenario-Presidencia: 15 asientos, micrófonos y podium.

EQUIPOS TECNICOS OPCIONALES

Interpretación simultánea para cuatro idiomas.
Grabación de sonido: cinta magnetofónica y cassettes.
Proyecciones: Diapositivas, películas de 8 mm, super 8 y 16 mm, transparencias.

ROOM NUMBER 1
Area: 450 m²

DISPOSITION:

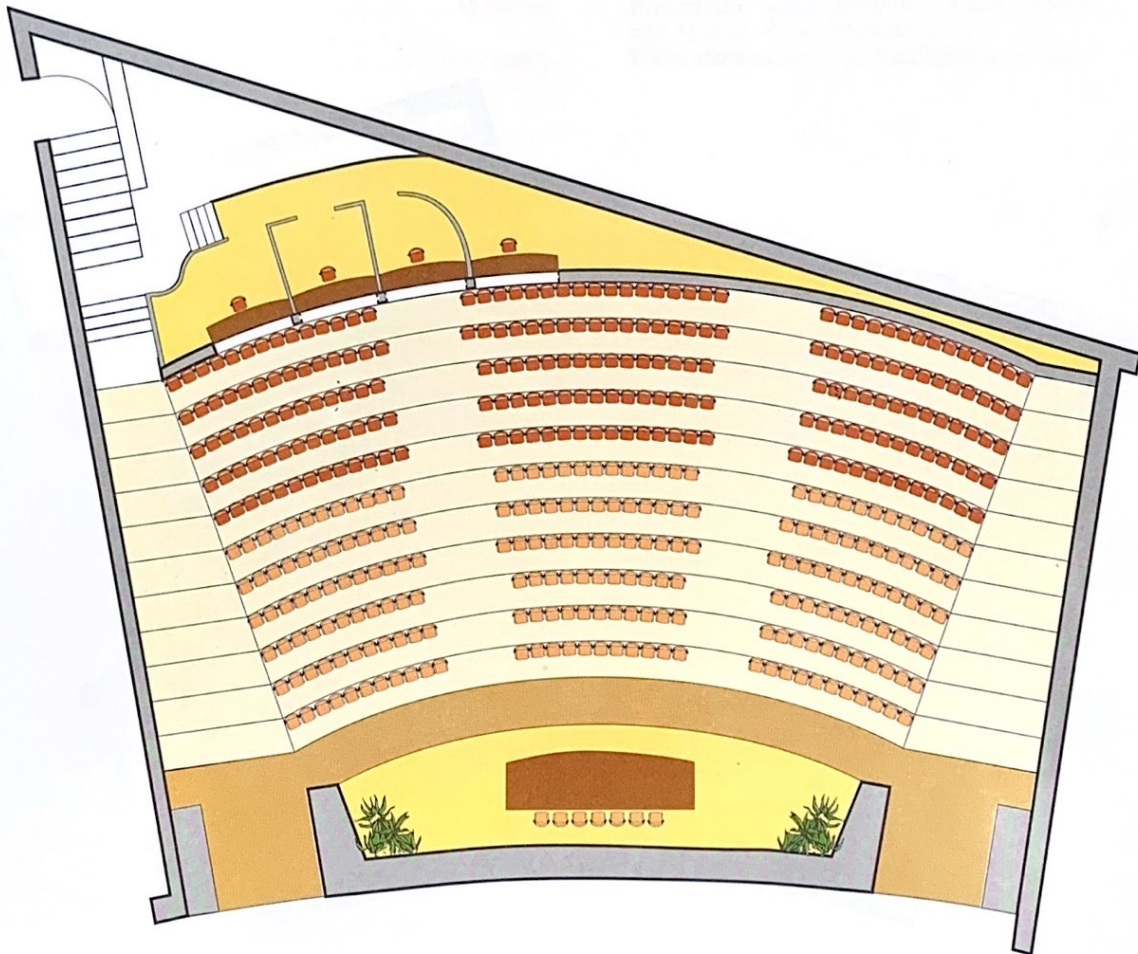
Capacity: 425 seats, theatre style.
Floor: 410 seat, with folding tables.
Stage: 15 seats, microphones and podium.

OPTIONAL TECHNICAL EQUIPMENT

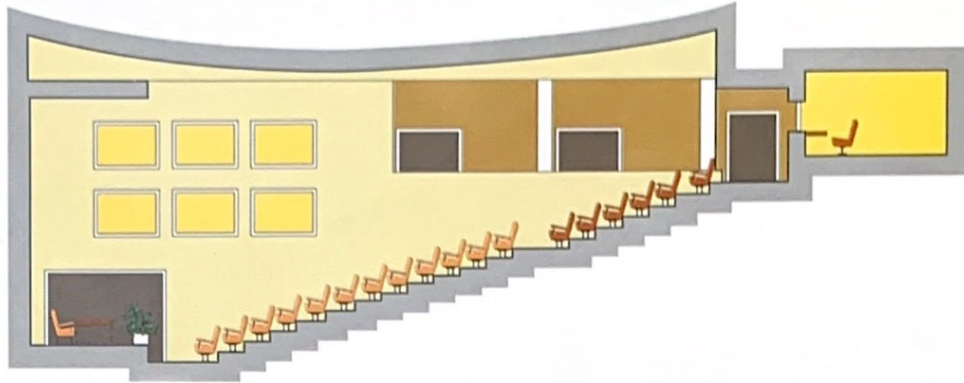
Simultaneous interpretation for 4 languages.
Sound Recording: magnetophonic tape and cassettes.
Projections: Slides, 8 mm, super 8 and 16 mm, films, transparencies.

7f → 456 3256

Eduardo.



AUDITORIUM AL-ANDALUS



Superficie: 1.500 m²

DISPOSICION:

Capacidad: 1.132 asientos, estilo teatro.
Patio: 1.062 asientos, con mesas abatibles.
Observadores: 50 asientos.
Escenario-Presidencia: 20 asientos,
micrófonos y podium.

EQUIPOS TECNICOS OPCIONALES

Interpretación simultánea para 10 idiomas.
Grabación de sonido: cinta magnetofónica y
cassettes.
Proyecciones: diapositivas, películas de 35-70 mm,
8 mm, super 8 y 16 mm, transparencias.
Iluminación fija de 20 lámparas sobre el escenario.

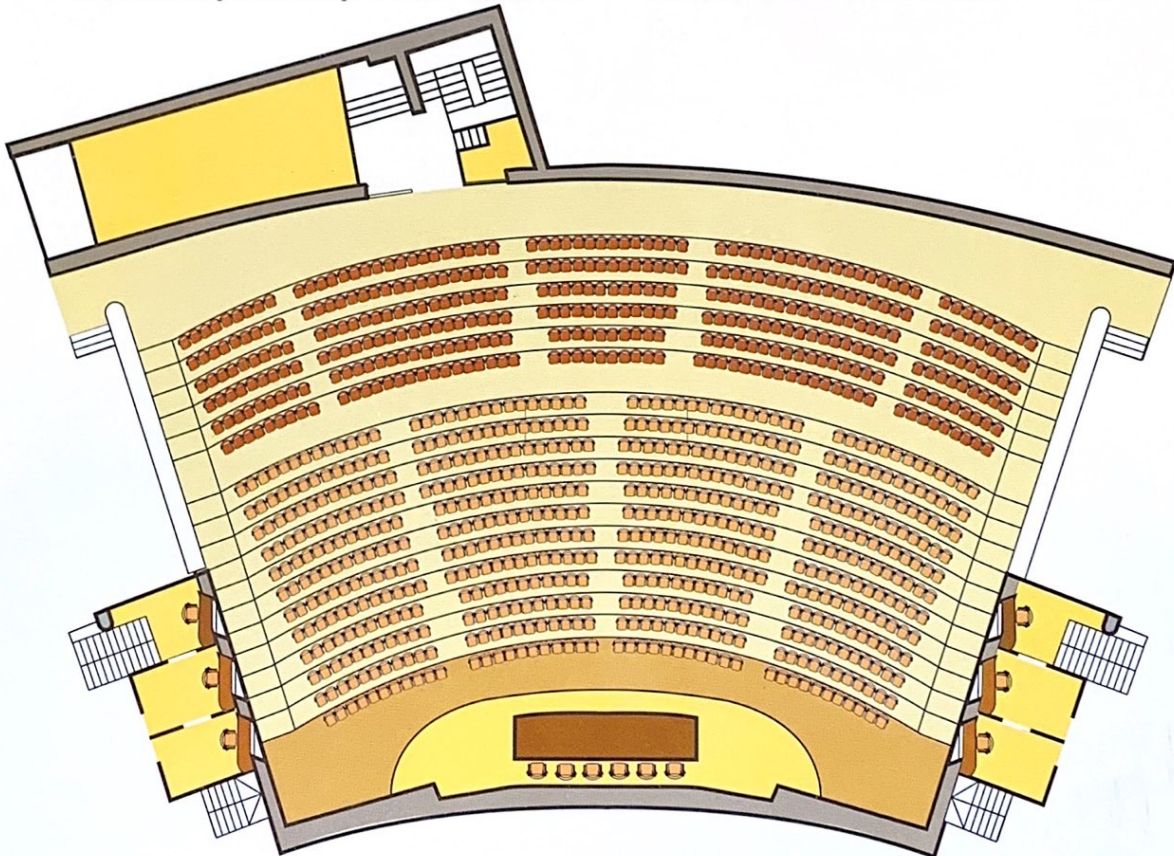
Area: 1.500 m²

DISPOSITION:

Capacity: 1.132 seats, theatre style.
Floor: 1.062 seats with folding tables.
Observes: 50 seats
Stage: 20 seats, microphones and
podium.

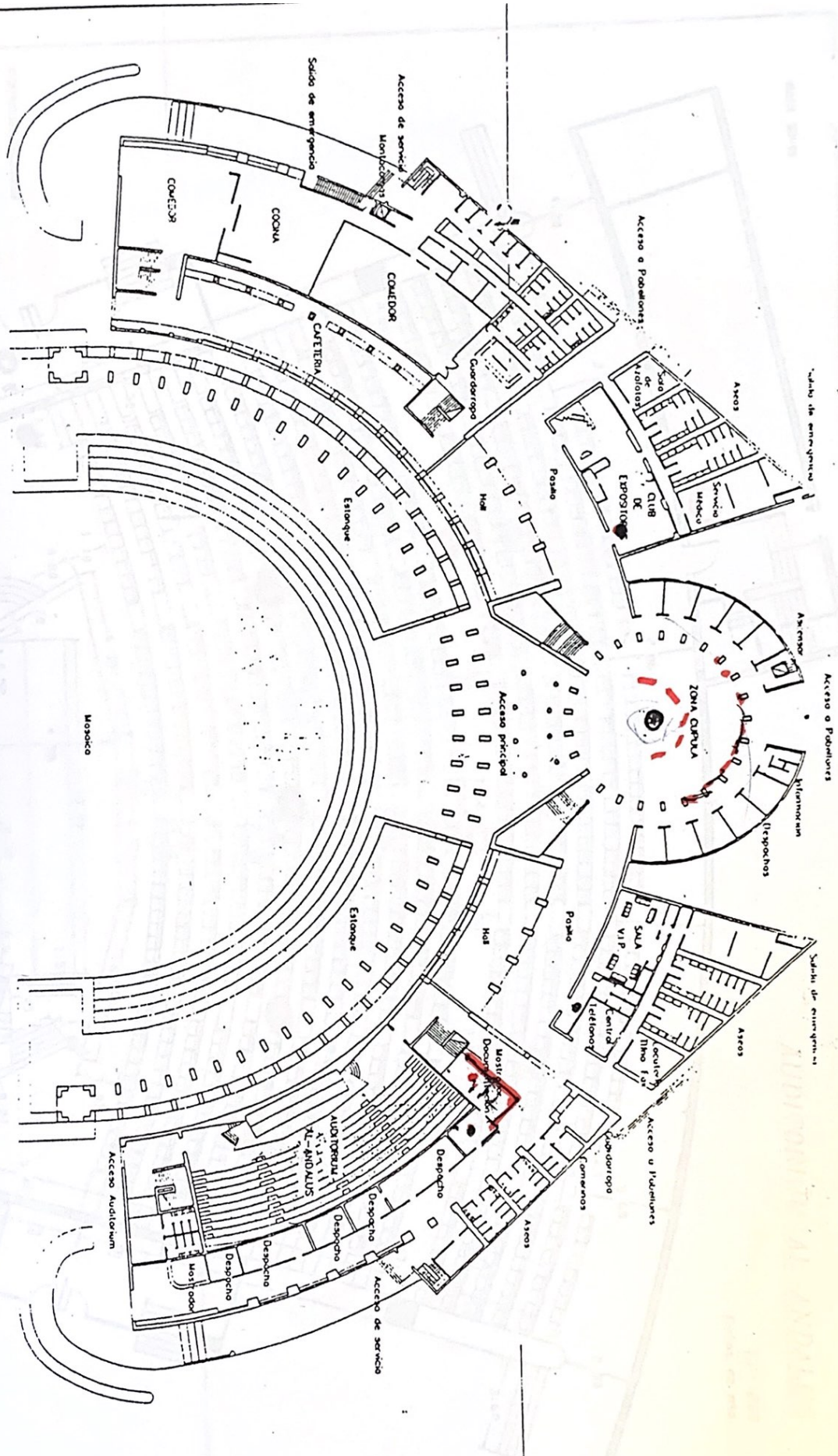
OPTIONAL TECHNICAL EQUIPMENT

Simultaneous interpretation for 10 languages.
Sound Recording: magnetophonic tape and
cassettes.
Projections: Slides, 35-70 mm, 8 mm, super 8
and 16 mm, films, transparencies.
Fixed illumination of 20 headlights over stage.



ZONA: PLANTA BAJA

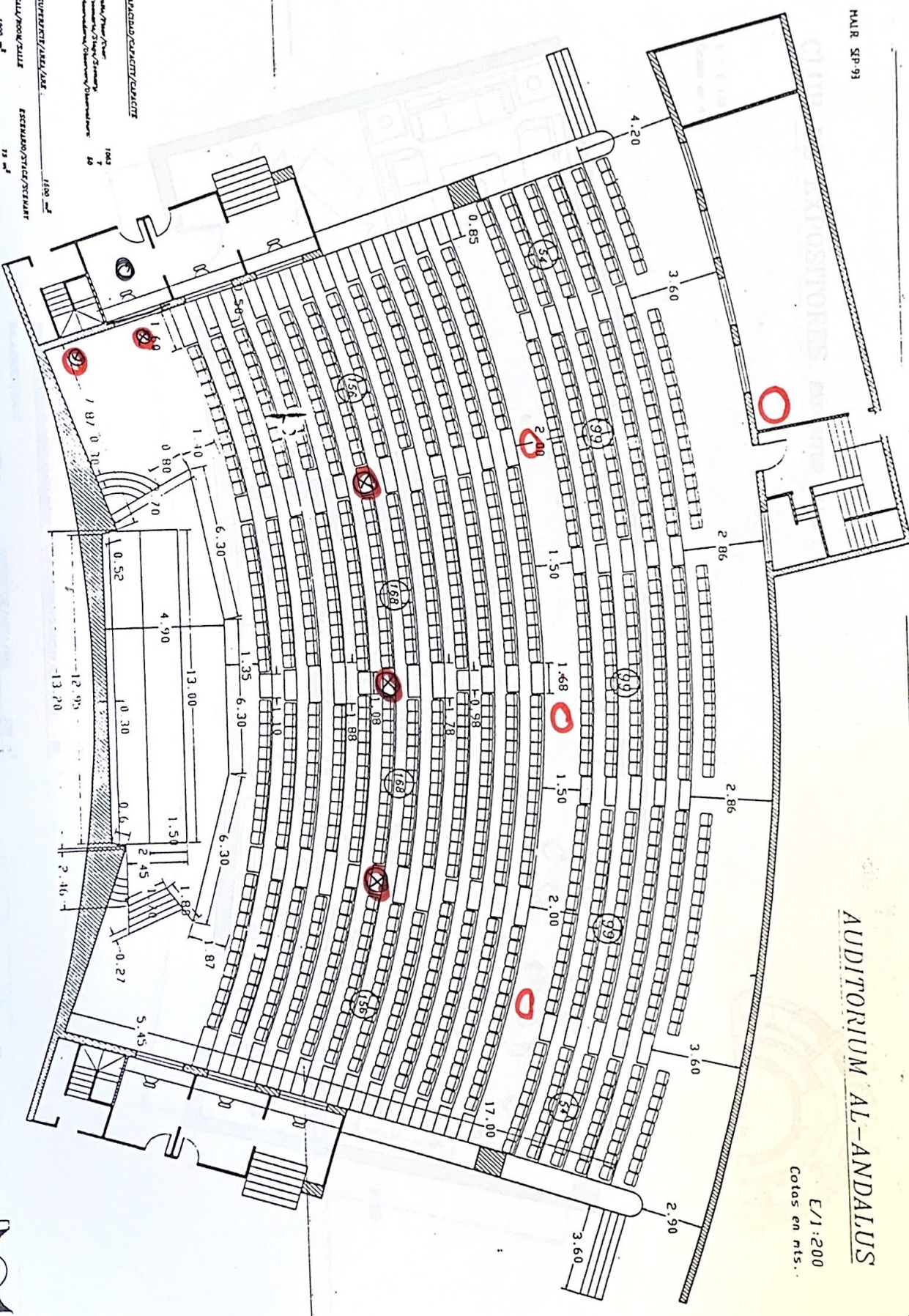
PALACIO DE CONGRESOS Y EXPOSICIONES
ESCALA 1:700



SI W I L L A

AUDITORIUM AL-ANDALUS

E/1:200
Cotas en mts.

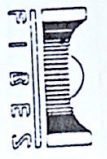


CAPACIDAD/CAPACITY/CAPACITE	1042
Público/Viewer/Visiteur	7
Reservado/Reserved/Reserve	40
Other/Other/Other	
Subtotal/Total/Total	1082

SUPERFICIE/AREA/ARE	1700 m ²
SALA/ROOM/SALE <td>1000 m²</td>	1000 m ²
ESCALAROS/STAIRS/STAIRS <td>70 m²</td>	70 m ²

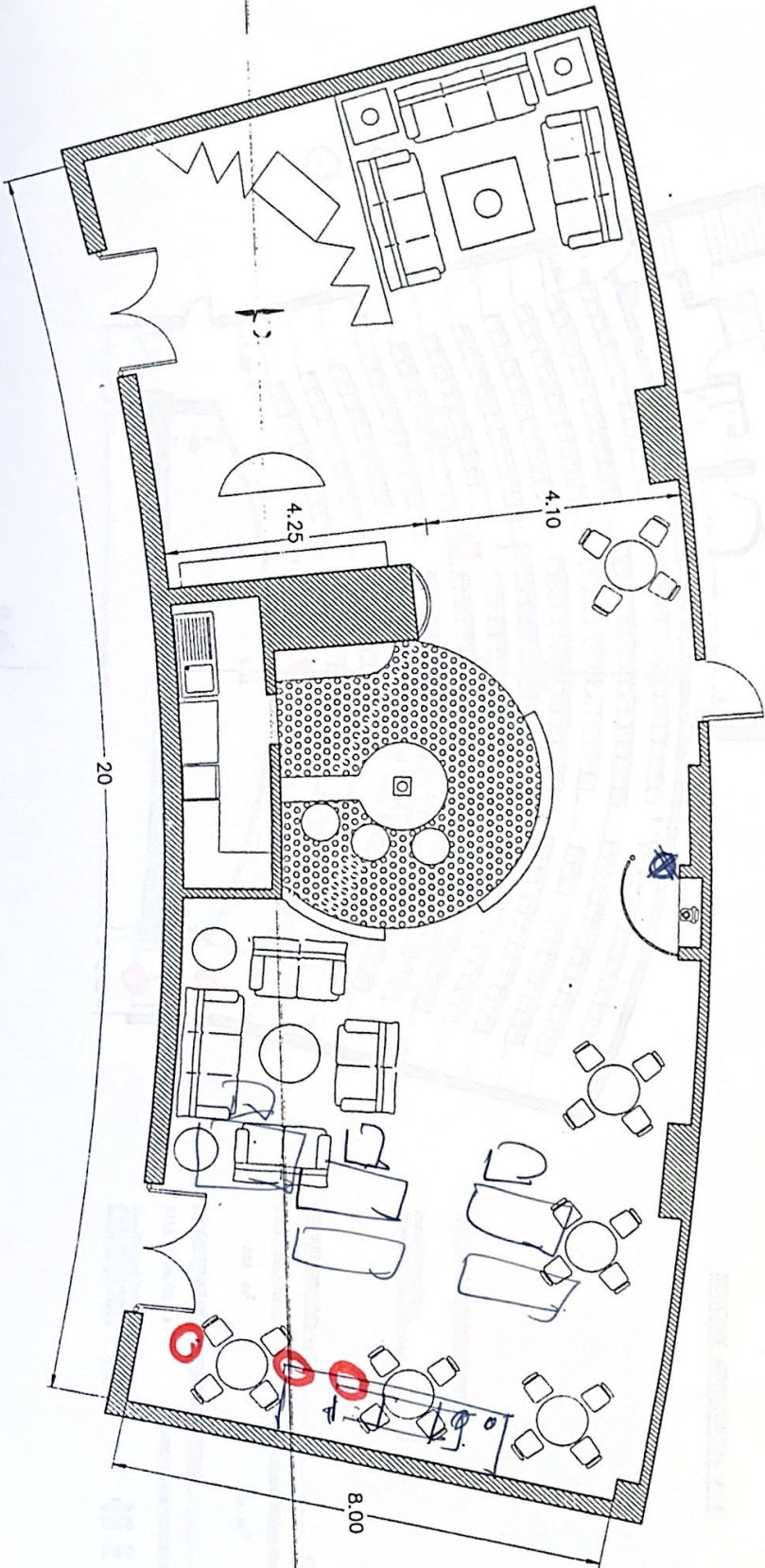
DIMENSIONES/DIMENSIONS/DIMENSIONS	ESCALAROS/STAIRS/STAIRS
SALA/ROOM/SALE	1700 m ²
Alt. Regal./Level	8.00 m
	7.20 m
	17.50 m

Palacio de Congresos Congress Center SEVILLA

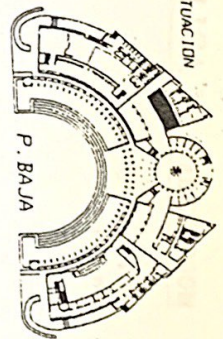


CLUB DE EXPOSITORES. EXPOSITOR CLUB

E / 1:100
Cotas en mts.



SITUACION



DIMENSIONES/DIMENSIONS/DIMENSIONS CAPACIDAD/CAPACITY/CAPACITE 80

SALA/ROOM/SALLE
 Alto/Height/Large: 4.20 m.
 Ancho/Width/Large: 8.00 m.
 Largo/Length/Long: 20.00 m

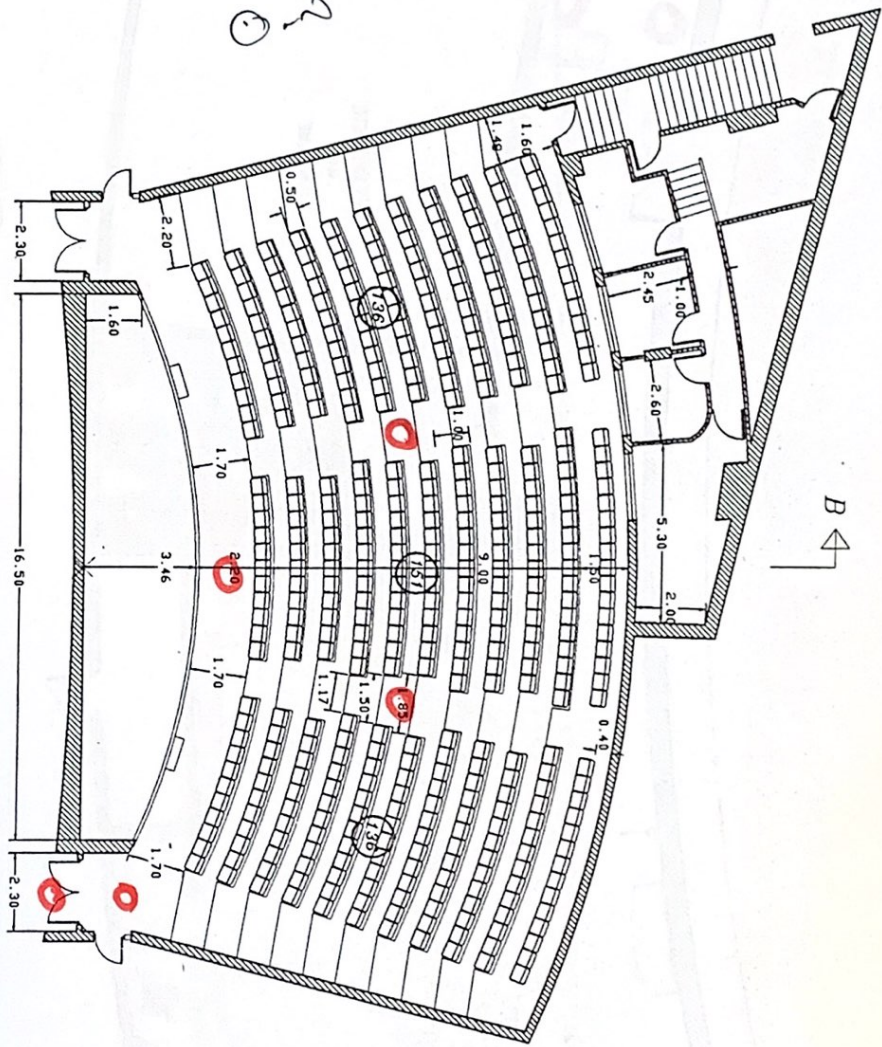
SUPERFICIE/AREA/ARE 330 m²

Palacio de Congresos
 Congress Center SEVILLA



SALA ITALICA . ITALICA ROOM

E / 1:200
Cotas en mts.



SECCION HORIZONTAL A-A'

CAPACIDAD/CAPACITY/CAPACITE

Plata/Flour/Coor. 423
Escenario/Stage/Scenarij. 16

SUPERFICIE/AREA/ARE :

SALA/ROOM/SALLE 450 m²
ESCAENARIO/STAGE/SCENARY 49 m²

DIMENSIONES/DIENSIONS/DIENSIONS

SALA/ROOM/SALLE	ESCAENARIO/STAGE/SCENARY
Alto/Height/Longe. 4.20 m.	3.20 m.
Ancho/Width/Loage. 26.00 m.	16.43 m.
Largeo/Length/Long. 17.00 m.	3.46 m.

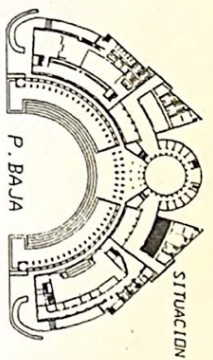
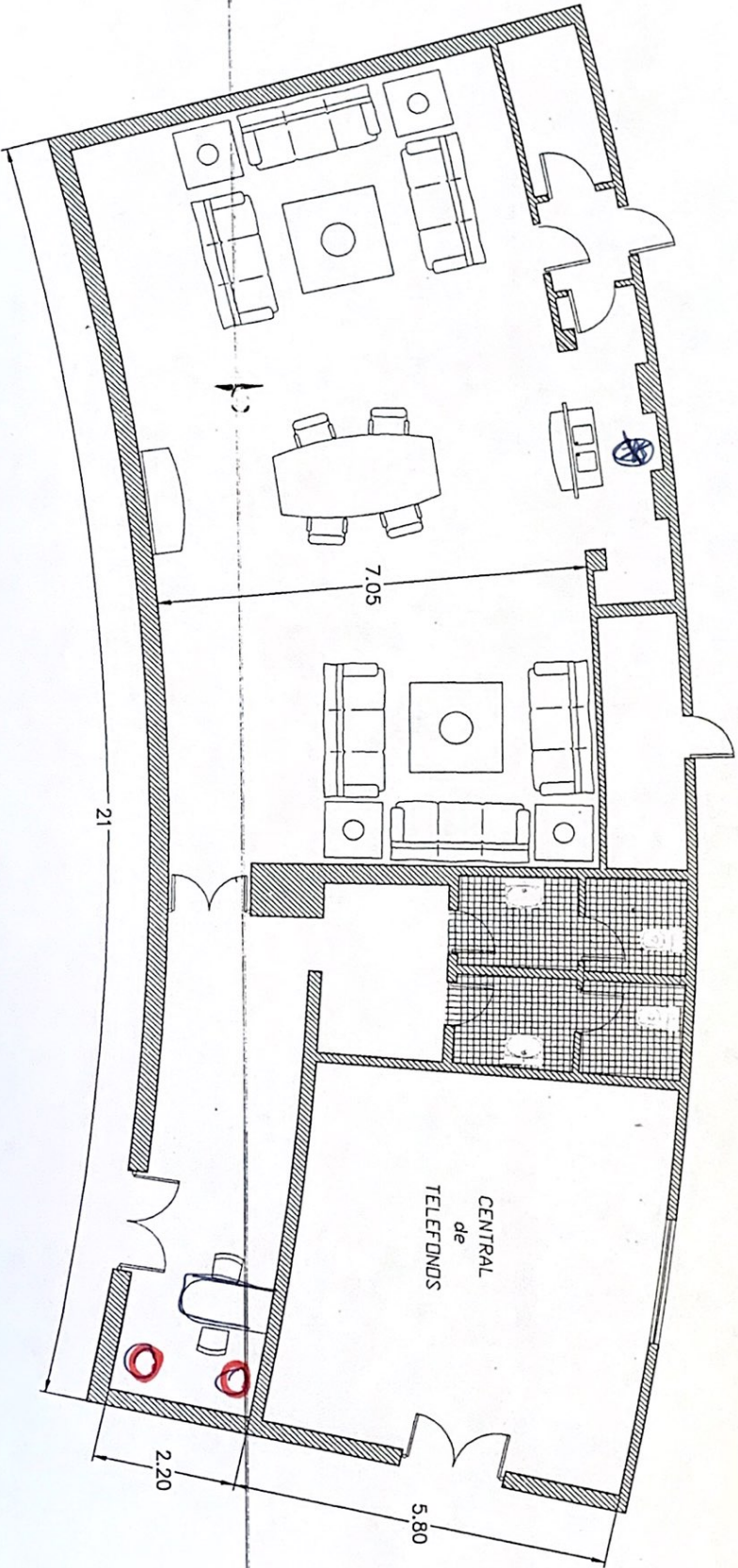
Palacio de Congresos
Congress Center

SEVILLA

P I R E S

SALA V.I.P. V.I.P. ROOM

E / 1:100
Cotas en mts.



DIMENSIONES/DIMENSIONS/DIMENSIONS CAPACIDAD/CAPACITY/CAPACITE 50

SALA/ROOM/SALLE Alto/Height/Large: 4.20 m.
Ancho/Width/Large: 7.00 m.
Largo/Length/Long: 12.20 m.

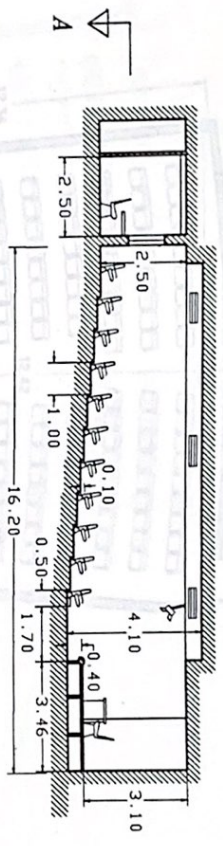
SUPERFICIE/AREA/ARE 250 m²

Palacio de Congresos
Congress Center SEVILLA

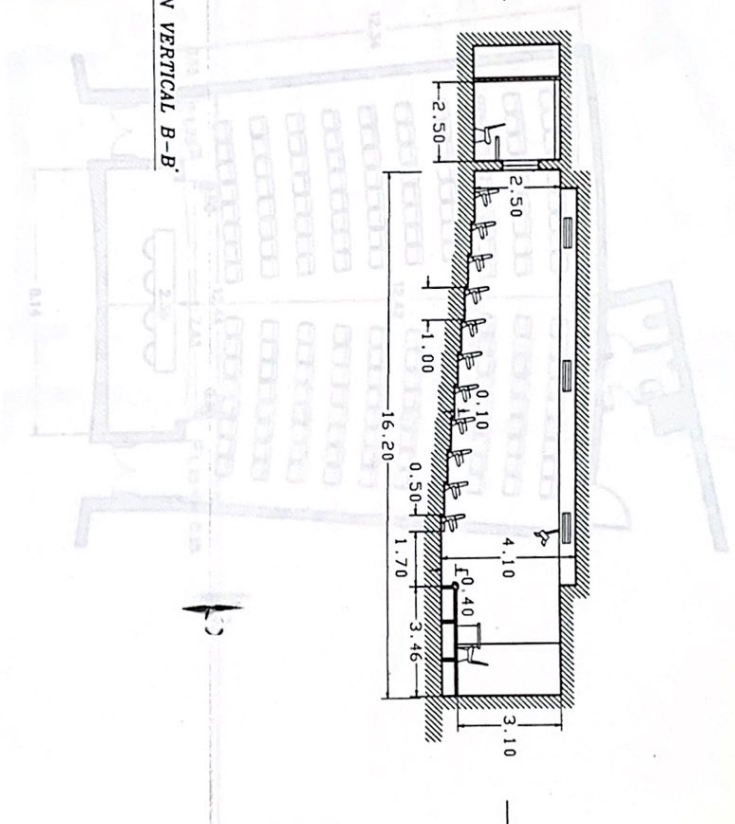


SALA ITALICA · ITALICA ROOM

E/1:200
Cotas en mts.
Cotas en P.M.S.



SECCION VERTICAL B-B'



CAPACIDAD/CAPACITY/CAPACITE
Public/Plaza/Plaza 428
Escenario/Stage/Scenarij 16

SUPERFICIE/AREA/ARE : 460 m²
SALA/HALL/SALLE 380 m²
ESCENARIO/STAGE/SCENARIJ 43 m²

DIMENSIONES/DIMENSIONS/DIMENSIONS
SALA/HALL/SALLE 4.20 m Ancho/Width/Large 28.00 m Largo/Length/Long 17.00 m
ESCENARIO/STAGE/SCENARIJ 3.20 m Ancho/Width/Large 18.50 m Largo/Length/Long 3.46 m

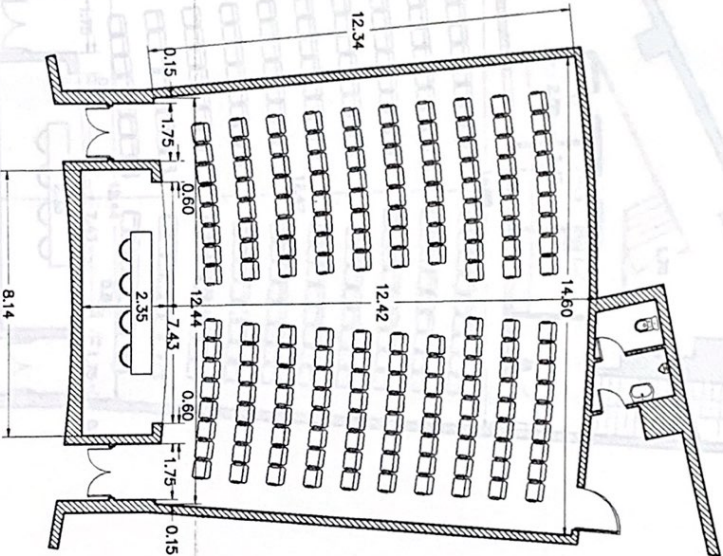
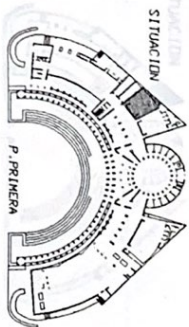
DESCRIPCION/DESCRIPTION/DESCRIPTION
SALA/HALL/SALLE ESCENARIO/STAGE/SCENARIJ
Ancho/Width/Large 4.20 m Ancho/Width/Large 4.00 m
Largo/Length/Long 28.00 m Largo/Length/Long 18.50 m
Superficie/Area/Area 380 m² Superficie/Area/Area 43 m²

Palacio de Congresos Congress Center SEVILLA



SALA BAHIA . BAHIA ROOM

E / 1:200
Cotas en mts.



CAPACIDAD/CAPACITY/CAPACITE 175

Patio/Floor/Coor: 170

Escenario/Stage/Scenary: 5

SUPERFICIE/AREA/ARE 200 m²

SALA/ROOM/SALLE ESCENARIO/STAGE/SCENARY
170 m² 24 m²

DIMENSIONES/DIMENSIONS/DIMENSIONS

SALA/ROOM/SALLE ESCENARIO/STAGE/SCENARY
Alto/Height/Large: 4.20 m. 4.00 m.
Ancho/Width/Large: 12.44 m. 2.35 m.
Largo/Length/Long: 12.42 m. 7.50 m.

Palacio de Congresos
Congress Center

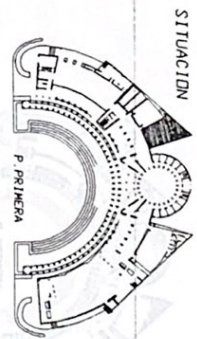
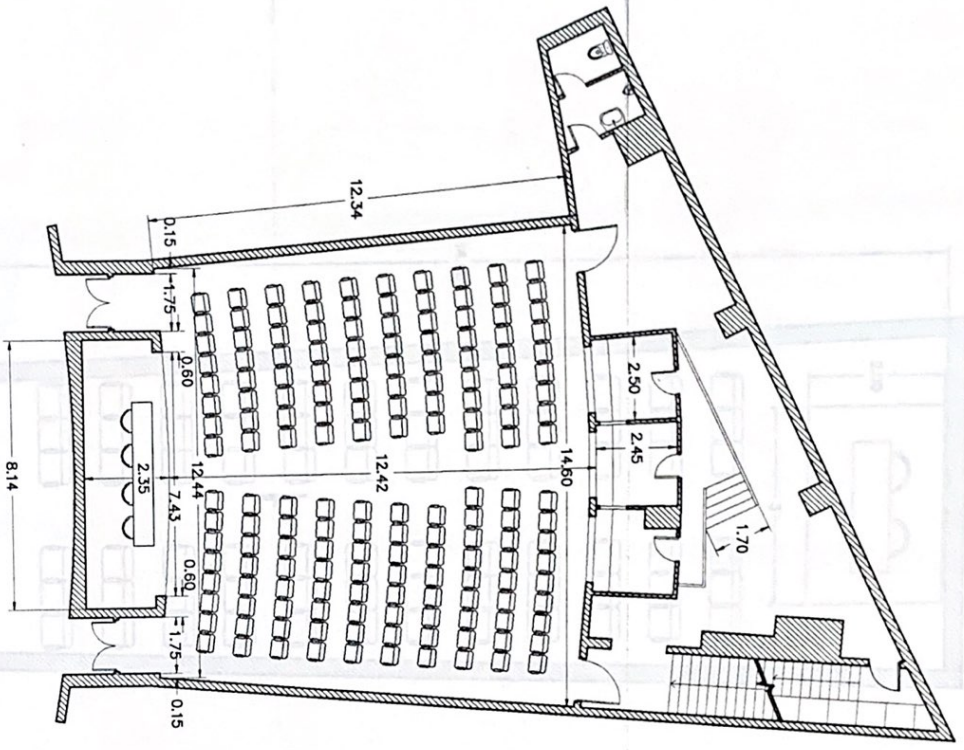
SEVILLA



SALON RONDA • ROUNDA ROOM

SALA MARISMA, MARISKA ROOM

E / 1:200
Cotas en rts.



CAPACIDAD/CAPACITY/CAPACITE 175

Patio/Floor/loor: 170

Escenario/Stage/Scenary: 5

SUPERFICIE/AREA/ARE 270 m²

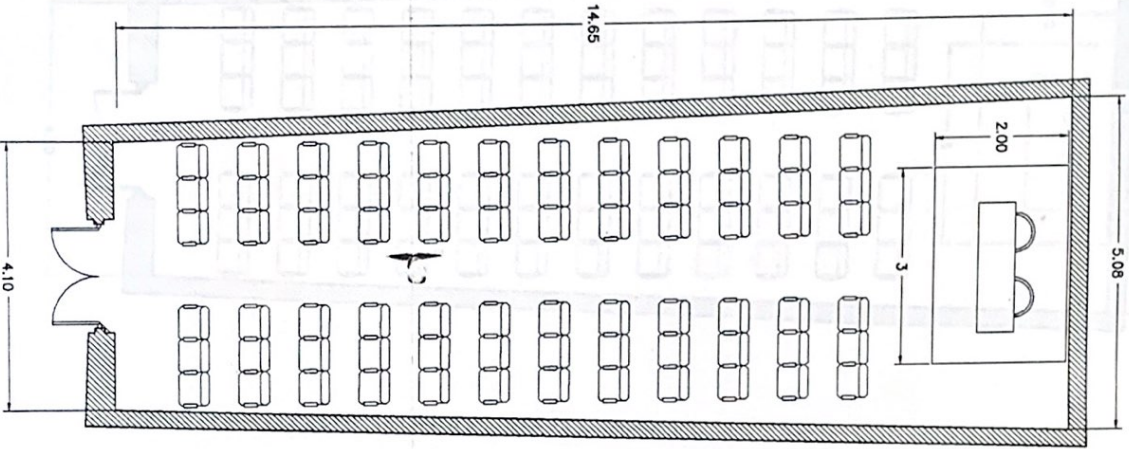
SALA/ROOM/SALLE ESCENARIO/STAGE/SCENARY 170 m²

DIMENSIONES/DIMENSIONS/DIMENSIONS

SALA/ROOM/SALLE ESCENARIO/STAGE/SCENARY
 Alto/Height/Large: 4.20 m. 4.00 m.
 Ancho/Width/Large: 12.44 m. 2.35 m.
 Largo/Length/Long: 12.42 m. 7.50 m.

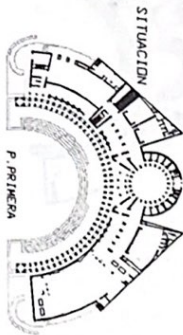
Palacio de Congresos
 Congress Center SEVILLA





SALA MARISMA. MARISMA ROOM

E / 1.1.100
Cotas en mts.



CAPACIDAD/CAPACITY/CAPACITE 75

Patio/Floor/Coor. 24

Escenario/Stage/Scenary. 3

SUPERFICIE/AREA/ARE 66 m²

SALA/ROOM/SALLE ESCENARIO/STAGE/SCENARY

66 m² 6.00 m²

DIMENSIONES/DIMENSIONS/DIMENSIONS

SALA/ROOM/SALLE ESCENARIO/STAGE/SCENARY

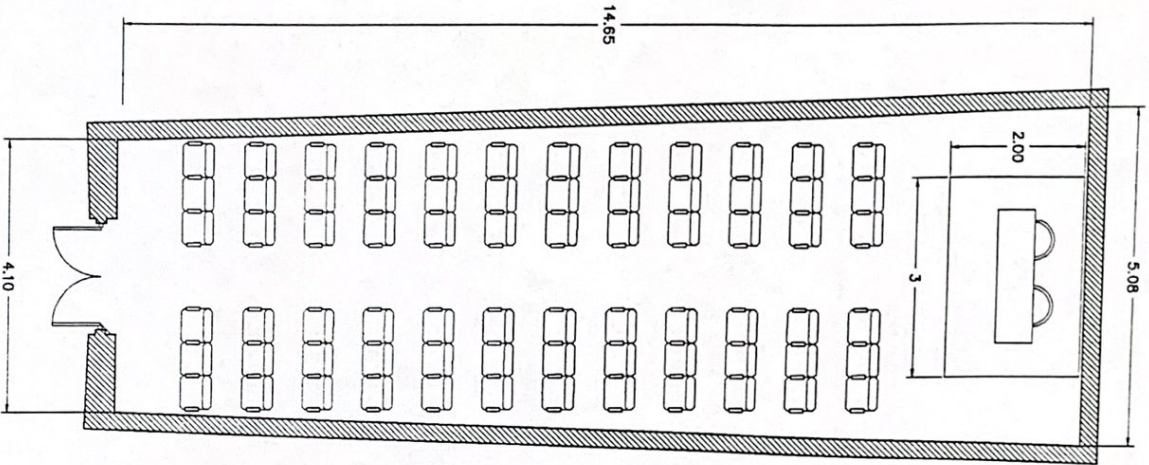
Alto/Height/Lorge: 4.20 m. 4.20 m.

Ancho/Width/Lorge: 4.60 m. 2.00 m.

Largo/Length/Long: 14.30 m. 3.00 m.

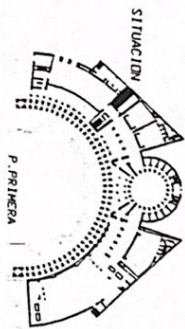
Palacio de Congresos
Congress Center SEVILLA





SALA MEZQUITA, MEZQUITA ROOM

E / 1:100
Cotas en mts.



CAPACIDAD/CAPACITY/CAPACITE		75
Patio/Floor/Coor.		24
Escenario/Stage/Scenery		3
SUPERFICIE/AREA/ARE		66 m²
SALA/ROOM/SALLE	ESCENARIO/STAGE/SCENARY	6.00 m ²
DIMENSIONES/DIMENSIONS/DIMENSIONS		
SALA/ROOM/SALLE	ESCENARIO/STAGE/SCENARY	
Alto/Height/Large	4.20 m.	4.20 m.
Ancho/Width/Longe	4.60 m.	2.00 m.
Largo/Length/Longy	14.30 m.	3.00 m.